



Carbon Black • SR711

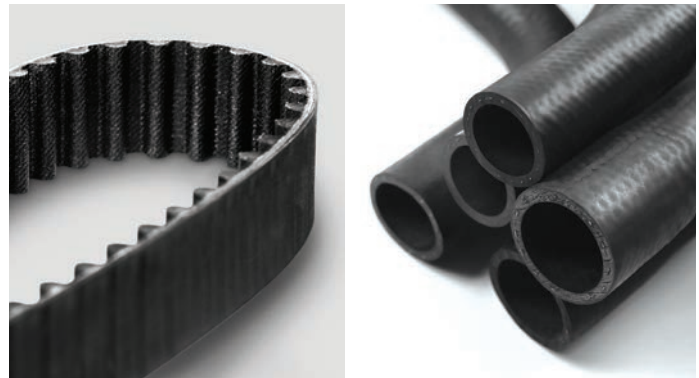
SR711 carbon black is a unpeletized N700 series carbon black developed for superior performance in extruded goods, belts and hoses, and molded goods. Also used as outstanding pigment for use in plastics, inks, paints, coatings, and other similar materials.

TYPICAL APPLICATIONS

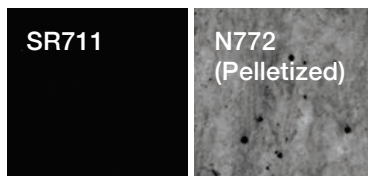
- Excellent extrusion properties
- Outstanding dispersibility
- Blue undertone, high jetness
- Excellent processability

PERFORMANCE FEATURES

- Extruded rubber goods
- Injection molded rubber goods
- Belts and hoses
- Coloring and tinting of:
 - Paints, primers
 - Inks
 - Plastics



Dispersion in Low Viscosity PDMS
(10 sec. Mixing)



This report is for information only. No warranty or guarantee is given or implied for the contents or any related product. This information may include inaccuracies, errors or omissions and Tokai Carbon CB Ltd. DISCLAIMS ALL WARRANTIES EXPRESSED OR IMPLIED, INCLUDING MARKETABILITY OR FITNESS FOR USE AS TO (i) SUCH INFORMATION, (ii) ANY PRODUCT OR INTELLECTUAL PROPERTY INFRINGEMENT. In no event is Tokai Carbon CB Ltd. responsible for and Tokai Carbon CB Ltd. does not accept and hereby disclaims liability for any damages whatsoever in connection with use of or reliance on this information or any related product.